



What's happening in your sewers?

Lets stop flushing wet wipes down the loo.

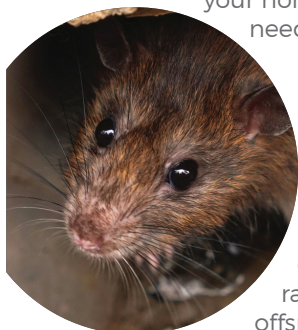


Wet wipes

Even if they are marked as flushable, wet wipes aren't. Don't put wipes down the loo, your loo, a public loo, someone else's loo. Any loo.

Wet wipes are building up in your sewers

Wipes are wipes, despite what the manufacturers say, wipes do not disintegrate once you've flushed them into a sewage system. And wipes are responsible for around half of sewer issues around the UK. The new sewerage system that serves your home is already starting to build a collection of wipes and they need to be removed, often by hand.



Rats love wipes

They build nests with them – almost like using them as sheets. So, you may want to consider that a pair of rats generates up to 2000 offspring a year... in their nests made of wipes... being

put down your loo.

They're building up

Wipes are already building up in the sewers around you.

Like all sewers, it gets cleaned out regularly, but we've noticed there's more wet wipes building up in the sewerage system at West Raynham than we'd expect to see.

So, what can you do?

It's very simple.

Only Flush:

- The three P's.
Poo, Pee and Paper.

These are the only things that should be flushed down the toilet.

Do not:

- Flush wet wipes down the toilet – put them in the bin
- Pour Fat, Oils or Grease down the drain

Dispose of these items responsibly.



Customer services 0330 111 0780

Email customerservices@icosawater.co.uk

Website icosawater.co.uk