



ICOSA WATER SERVICES LIMITED

Board statement on accuracy and completeness of data and information. 2021-2022

In accordance with the requirements set out in its Instrument of Appointment which came into effect on 1 June 2017, the Board of Directors of Icosa Water Services Limited (the "Company") confirm that, in the opinion of the Board, the data and information that has been provided to Ofwat and/or published in their role as water and sewerage undertaker for the reporting year 1st April 2021 to 31st March 2022 was complete and accurate.

The board has implemented and undertaken the following controls to ensure the completeness and accuracy of reported data and information:

- Monthly board meetings to review and challenge financial and operational performance reports.
- Independent annual financial audit to test and confirm the completeness and accuracy of its statutory financial reports.
- Employment of directors and senior management with appropriate technical qualifications and experience to manage the statutory responsibilities of the business.
- Use of third-party and other group companies for the provision of specialist services, for example, water quality sample analysis, customer billing and asset maintenance.
- The development and implementation of appropriate business systems to record the necessary financial and operational performance.
- Management committees and working groups to ensure that activities are managed effectively.

Dated: 15th August 2022

Signed on behalf of the board.

A handwritten signature in black ink, appearing to read "R A Bradley".

Rob Bradley

Director of Finance and Customer Services.



Icosa Water Services Limited
Annual Performance Report
For the year ending 31st March 2022

Icosa Water Services Limited

Introduction

Icosa Water Services Limited (the “Company”) commenced trading on 1st June 2017 following the grant by Ofwat of a new appointment to the Company to become the water and sewerage services provider for West Raynham and to revoke the appointment of Icosa Water Limited. The Company has been granted 106 wastewater Inset appointments and 27 water Inset appointments as at 31th March 2022.

Activities of the Company during the year ending 31st March 2022 were limited to the operation of 72 sites comprising 7,803 household connections and 17 non-household connections. New homes were being built on the majority of Icosa’s sites during the year.

Icosa Water Services Limited

Financial Accounts for the Year Ending 31st March 2022

Profit and Loss

Icosa Water Services Limited
For the year ended 31 March 2022

	Year Ending 31/03/22 £000	Year Ending 31/03/21 £000
Turnover	1,931.26	852.27
Cost of Sales	1,541.84	652.64
Administrative Costs	50.05	54.79
Operating Profit	339.37	144.84
Interest charges	161.37	458.22
Profit on Ordinary Activities before Taxation	178.00	(313.37)

Balance Sheet

Icosa Water Services Limited
As at 31 March 2022

	Year Ending 31/03/22 £000	Year Ending 31/03/21 £000
Fixed Assets	5,192.74	2,223.35
Current Assets	1,152.12	636.36
Current Liabilities (amounts falling due within one year)	4,535.84	1,402.86
Net Current Assets	(3,383.72)	(766.49)
Creditors: amounts falling due after more than one year	(1,823.82)	(1,649.98)
Net Assets	(14.80)	(193.12)
Capital and Reserves	(14.80)	(193.12)

Icosa Water Services Limited

Notes to the Financial Statements for the year ended 31st March 2020

Basis of preparation

The financial statements have been prepared under the historical cost convention and in accordance with applicable accounting standards.

Going concern

The business is cash generative and has access to sufficient funds to continue its operations into the foreseeable future. The company therefore adopts the going concern basis in preparing its financial statements.

Statement on links between Directors' pay and standards of performance

There are no performance related incentives in place for the remuneration of its Directors against standards of performance. The principal Directors are however shareholders in the company and incentivised accordingly to ensure that the company meets and exceeds the necessary performance standards required by its licence.

Statement on dividend policy

Subject to the business results and the capital needs of the business, the Board of Directors may, at its discretion declare and approve the distribution of dividends to its shareholders.

Icosa Water Services Limited

Key Performance Indicators for year ended 31st March 2022

Payments under Guaranteed Standards Scheme

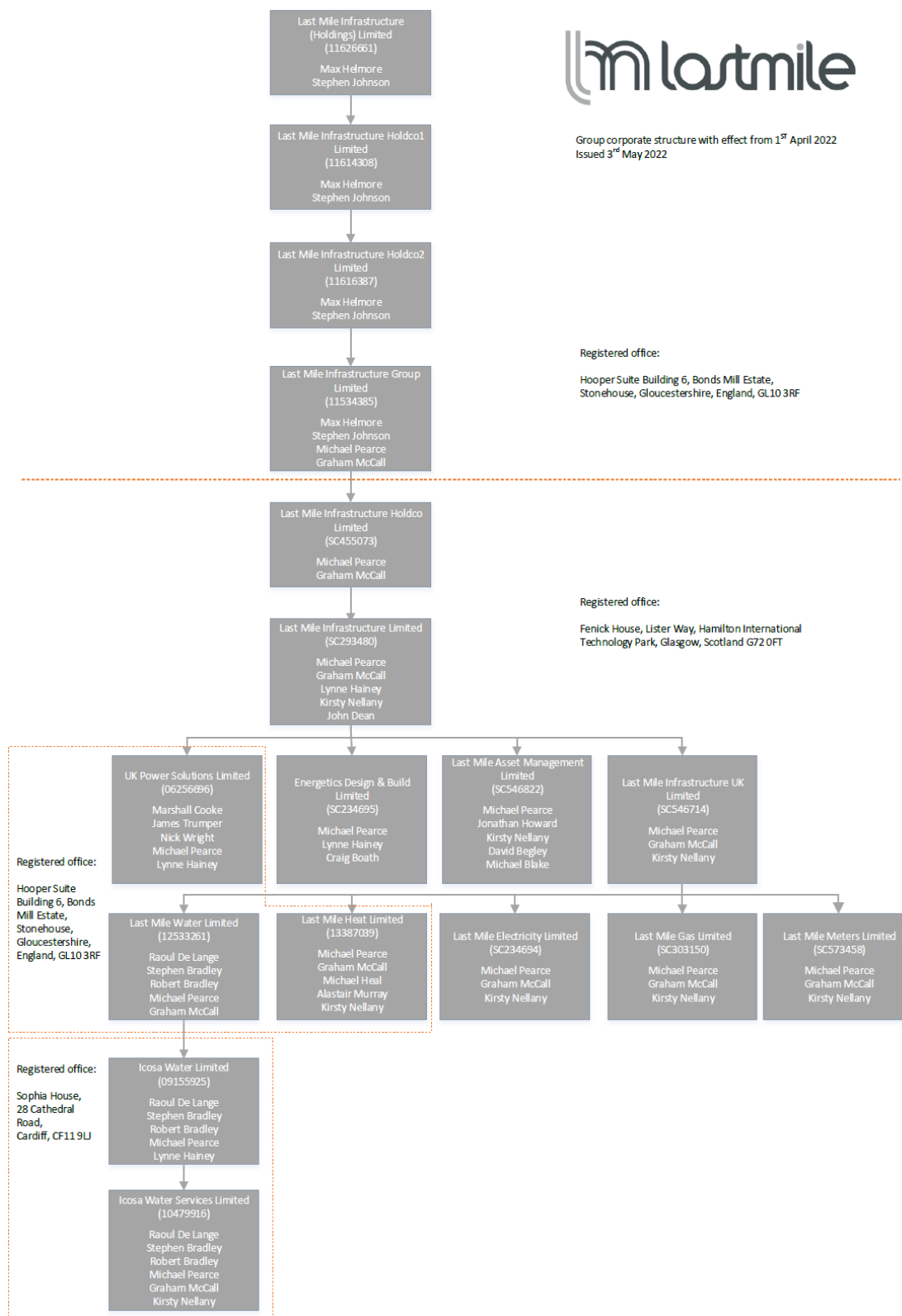
Customers of water and sewerage companies are entitled to guaranteed minimum standards of service, as laid down by the Government in the Water Supply and Sewerage Services (Customer Service Standards) Regulations 2008. The table below outlines the Company's performance for the year ending 31st March 2022.

Description of Standard	Number of Failures	Total Amount of Compensation paid £
KEEPING OF APPOINTMENTS		
Failure to provide notice in the required form	0	£0
Failure to attend appointment on day specified	0	£0
Failure to attend appointment during the time specified	0	£0
COMPLAINTS, ACCOUNT QUERIES AND REQUESTS ABOUT PAYMENT ARRANGEMENTS		
Failure to reply to a complaint or query within 10 working days	0	£0
Failure to reply to a request to change payment arrangements within 5 working days	0	£0
NOTICE OF INTERRUPTION OF SUPPLY		
Failure to provide at least 48 hours' notice of an interruption of supply	0	£0
ENTITLEMENT TO PAYMENT OR CREDIT WHERE SUPPLY NOT RESTORED AS PROMISED		
Failure to restore supply by the time and date specified in the notice	0	£0
Failure to restore supply within 48 hours of a leak or burst	0	£0
Failure to restore supply within 12 hours	0	£0
PRESSURE STANDARD		
Failure to meet the pressure standard	0	£0
FLOODING FROM SEWERS - INTERNAL FLOODING OF BUILDINGS		
Number of internal sewer flooding incidents	0	£0
FLOODING FROM SEWERS - EXTERNAL FLOODING		
Number of external sewer flooding incidents	3	£0
TIMING OF PAYMENTS		
Penalty payments made	0	£0

Icosa Water Services Limited

Corporate and Board Structure

Corporate Structure



Icosa Water Services Limited

Risk and Compliance Statement

General

The Company is a new market entrant that competes to win new appointments and variations under sections 6-8 of the Water Industry Act 1991 (as amended).

The following risk and compliance statement has been developed to satisfy Ofwat's annual reporting requirements and is subject to review at least every 12 months.

Risk and Compliance Approach

- i. The Company has implemented appropriate business systems and processes to monitor, manage and review risk and compliance.
- ii. The Company applies risk management procedures to identify, monitor and manage risks.
- iii. The Company has implemented an appropriate structure and appointed key staff with clear lines of responsibility to manage its risk and compliance.

Risk and Compliance Controls

- Risks and control measures are recorded on a central risk register. This register is subject to continuous review.
- The Company uses Water Industry Registration Scheme "WIRS" accredited contractors for the construction and maintenance of its networks.
- The Company performance is continually monitored and reported monthly or immediately if necessary to management.
- The Company has developed and implemented a computerised customer service system to monitor, record and control the delivery of services to customers.
- The Company regularly meets with upstream incumbents to identify any current, ongoing or future risks.
- The Company has systems in place to help ensure compliance with Water Supply (Water Quality) Regulations 2016. These systems include monitoring of:
 - customer enquiries,
 - network performance e.g. failure rates, leakage & pressure
 - quality
- The Company also has a comprehensive suite of policies and procedures which cover the life cycle of its assets from design thorough installation, commissioning and operation to end of life and decommissioning.
- The Company develops Drinking Water Safety Plans (DWSPs) for each new area it is appointed when Ofwat varies its license. These plans are risk assessments which cross reference management plans to establish then mitigate the risk of supplying unwholesome water to consumers. DWSPs are required under Regulation 27 of the Water Supply (Water Quality) 2016 Regulations to be submitted to the Secretary of State and kept under continual review.
- The Company uses accredited third parties for water quality sampling.

- The Company has a drought plan which outlines how customers will be provided with an adequate supply of wholesome water in the event of drought. The plan is subject to review and/or revision in the event of any of the following circumstances:
 - If directed to do so by the Secretary of State
 - In the event of any material change in circumstances
 - In any event, three years after the date of publication.

Compliance Statement

The Board of Directors of the Company confirm that, in the opinion of the Board:

- i. The Company has a full understanding of, and is meeting, all its relevant statutory, licence and regulatory obligations and has taken steps to understand and meet customer expectations;
- ii. The Company has satisfied itself that it has sufficient processes and internal systems of control to fully meet its obligations;
- iii. The Company has appropriate systems and processes in place to allow it to identify, manage, mitigate and review its risks.

Dated: 14 July 2022

A handwritten signature in black ink, appearing to read "R A Bradley".

R A Bradley

Director

Pro forma F1

Analysis of revenue and operating costs			Icosa Water Services						ICW	
Line description	Units	Decimal places (DPs)	1	2	3	4	5	6	Line reference	Comments (For internal use only, not to be
			2021-22			2020-21				
			Water	Wastewater	Total	Water	Wastewater	Total		
Revenue										
Unmeasured - household	£m	3	0.000	0.000	0.000	0.000	0.000	0.000	F1.1	
Unmeasured - non-household	£m	3	0.000	0.000	0.000	0.000	0.000	0.000	F1.2	
Measured - household	£m	3	0.254	1.615	1.869	0.103	0.698	0.802	F1.3	
Measured - non-household	£m	3	0.013	0.015	0.027	0.012	0.015	0.027	F1.4	
Other	£m	3	0.000	0.035	0.035	0.000	0.024	0.024	F1.5	
Total revenue	£m	3	0.267	1.665	1.931	0.116	0.737	0.852	F1.6	
Retail operating costs										
Customer services - household	£m	3	0.021	0.094	0.115	0.012	0.053	0.065	F1.7	
Debt management - household	£m	3	0.000	0.000	0.000	0.000	0.000	0.000	F1.8	
Doubtful debts - household	£m	3	0.001	0.005	0.006	0.003	0.022	0.025	F1.9	
Meter reading - household	£m	3	0.000	0.000	0.000	0.000	0.000	0.000	F1.10	
Other operating costs - household	£m	3	0.000	0.014	0.014	0.000	0.013	0.013	F1.11	
Local authority and cumulo rates - household	£m	3	0.000	0.000	0.000	0.000	0.000	0.000	F1.12	
Total household operating costs	£m	3	0.022	0.113	0.135	0.015	0.088	0.103	F1.13	
Customer services - non-household	£m	3	0.000	0.000	0.000	0.000	0.000	0.000	F1.14	
Debt management - non-household	£m	3	0.000	0.000	0.000	0.000	0.000	0.000	F1.15	
Doubtful debts - non-household	£m	3	0.000	0.000	0.000	0.000	0.000	0.000	F1.16	
Meter reading - non-household	£m	3	0.000	0.000	0.000	0.000	0.000	0.000	F1.17	
Services to developers - non-household	£m	3	0.000	0.000	0.000	0.000	0.000	0.000	F1.18	
Other operating costs - non-household	£m	3	0.000	0.000	0.000	0.000	0.000	0.000	F1.19	
Local authority and cumulo rates - non-household	£m	3	0.000	0.000	0.000	0.000	0.000	0.000	F1.20	
Total non-household operating costs	£m	3	0.000	0.000	0.000	0.000	0.000	0.000	F1.21	
Wholesale operating costs										
Power	£m	3	0.000	0.000	0.000	0.000	0.000	0.000	F1.22	
Service charges/ discharge consents	£m	3	0.000	0.000	0.000	0.000	0.000	0.000	F1.23	
Bulk Supply/Bulk discharge	£m	3	0.228	1.062	1.290	0.090	0.451	0.541	F1.24	
Other operating costs - wholesale	£m	3	0.023	0.103	0.126	0.008	0.035	0.043	F1.25	
Local authority rates	£m	3	0.000	0.000	0.000	0.000	0.000	0.000	F1.26	
Total operating costs										
Total operating costs - retail and wholesale	£m	3	0.273	1.278	1.551	0.113	0.574	0.687	F1.27	
Depreciation										
Depreciation - retail	£m	3	0.000	0.000	0.000	0.000	0.000	0.000	F1.28	
Depreciation - wholesale	£m	3	0.007	0.034	0.041	0.003	0.016	0.019	F1.29	
Total depreciation	£m	3	0.007	0.034	0.041	0.003	0.016	0.019	F1.30	
Operating profit										
Total operating profit	£m	3	-0.013	0.352	0.339	0.000	0.146	0.146	F1.31	
Other income										
Other income	£m	3	0.000	0.000	0.000	0.000	0.000	0.000	F1.32	
Interest										
Interest income	£m	3	0.000	0.000	0.000	0.000	0.000	0.000	F1.33	
Interest expense	£m	3	0.029	0.132	0.161	0.084	0.375	0.459	F1.34	
Profit before tax	£m	3	-0.042	0.220	0.178	-0.084	-0.229	-0.313	F1.35	
Tax										
UK Corporation tax	£m	3	0.000	0.000	0.000	0.000	0.000	0.000	F1.36	
Deferred tax	£m	3	0.000	0.000	0.000	-0.004	-0.018	-0.022	F1.37	
Profit for the year	£m	3	-0.042	0.220	0.178	-0.080	-0.211	-0.291	F1.38	
Dividends										
Dividends	£m	3	0.000	0.000	0.000	0.000	0.000	0.000	F1.39	

Pro forma F2

Line description	Units	Decimal places (DPs)	1	2	3	4	5	Line reference	Comments (For internal use only, not to be reviewed by Ofwat)
			Statutory	Adjustments			Total appointed activities		
				Differences between statutory and RAG definitions	Non-appointed	Total adjustments			
Revenue									
Total revenue	£m	3	1.931	0.000	0.000	0.000	1.931	F2.1	
Total operating profit	£m	3	0.337	0.000	0.000	0.000	0.337	F2.2	
Profit for the year	£m	3	0.178	0.000	0.000	0.000	0.178	F2.3	

Pro forma F3

Statement of financial position	Icosa Water Services	ICW
---------------------------------	----------------------	-----

			1	2		
Line description	Units	Decimal places (DPs)	2021-22	2020-21	Line reference	Comments (For internal use only, not to be)
Non-current assets						
Fixed assets	£m	3	5.193	2.223	F3.1	
Intangible assets	£m	3	0.000	0.000	F3.2	
Investments - loans to group companies	£m	3	0.000	0.000	F3.3	
Investments - other	£m	3	0.000	0.000	F3.4	
Financial instruments	£m	3	0.000	0.000	F3.5	
Retirement benefit assets	£m	3	0.000	0.000	F3.6	
Total non-current assets	£m	3	5.193	2.223	F3.7	
Current assets						
Inventories	£m	3	0.000	0.000	F3.8	
Trade & other receivables	£m	3	1.006	0.476	F3.9	
Financial instruments	£m	3	0.000	0.000	F3.10	
Cash & cash equivalents	£m	3	0.146	0.161	F3.11	
Total current assets	£m	3	1.152	0.637	F3.12	
Current liabilities						
Trade & other payables	£m	3	-0.522	-0.227	F3.13	
Capex creditor	£m	3	-4.015	-1.177	F3.14	
Borrowings	£m	3	0.000	0.000	F3.15	
Financial instruments	£m	3	0.000	0.000	F3.16	
Current tax liabilities	£m	3	0.000	0.000	F3.17	
Provisions	£m	3	0.000	0.000	F3.18	
Total current liabilities	£m	3	-4.537	-1.404	F3.19	
Net Current assets/(liabilities)	£m	3	-3.385	-0.767	F3.20	
Non-current liabilities						
Trade & other payables	£m	3	0.000	0.000	F3.21	
Borrowings	£m	3	-1.824	-1.650	F3.22	
Financial instruments	£m	3	0.000	0.000	F3.23	
Retirement benefit obligations	£m	3	0.000	0.000	F3.24	
Provisions	£m	3	0.000	0.000	F3.25	
Deferred income – grants & contributions	£m	3	0.000	0.000	F3.26	
Deferred income – adopted assets	£m	3	0.000	0.000	F3.27	
Preference share capital	£m	3	0.000	0.000	F3.28	
Deferred tax	£m	3	0.000	0.000	F3.29	
Total non-current liabilities	£m	3	-1.824	-1.650	F3.30	
Net assets	£m	3	-0.016	-0.194	F3.31	
Equity						
Called up share capital	£m	3	0.000	0.000	F3.32	
Retained earnings & other reserves	£m	3	-0.016	-0.194	F3.33	
Total Equity	£m	3	-0.016	-0.194	F3.34	

Pro forma F4

Statement of cashflows

Icosa Water Services

ICW

Line description		Units	Decimal places (DPs)	1 2021-22	2 2020-21	Line reference	Comments (For internal use only, not to be published)
Operating activities							
Operating profit	£m	3		0.339	0.146	F4.1	
Other income	£m	3		0.000	0.000	F4.2	
Depreciation	£m	3		0.041	0.019	F4.3	
Amortisation – Grants and contributions	£m	3		0.000	0.000	F4.4	
Changes in working capital	£m	3		-0.120	-0.290	F4.5	
Pension contributions	£m	3		0.000	0.000	F4.6	
Movement in provisions	£m	3		0.006	0.025	F4.7	
Profit on sale of fixed assets	£m	3		0.000	0.000	F4.8	
Cash generated from operations	£m	3		0.266	-0.100	F4.9	
Net interest paid	£m	3		-0.161	-0.459	F4.10	
Tax paid	£m	3		0.000	0.000	F4.11	
Net cash generated from operating activities	£m	3		0.105	-0.559	F4.12	
Investing activities							
Capital expenditure	£m	3		-2.810	-0.950	F4.13	
Grants and contributions	£m	3		0.000	0.000	F4.14	
Disposal of fixed assets	£m	3		0.000	0.000	F4.15	
Other	£m	3		0.000	0.000	F4.16	
Net cash used in investing activities	£m	3		-2.810	-0.950	F4.17	
Net cash generated before financing activities	£m	3		-2.705	-1.509	F4.18	
Cashflows from financing activities							
Equity dividends paid	£m	3		0.000	0.000	F4.19	
Net loans received	£m	3		0.170	0.960	F4.20	
Cash inflow from equity financing	£m	3		0.000	0.000	F4.21	
Net cash generated from financing activities	£m	3		0.170	0.960	F4.22	
Increase (decrease) in net cash	£m	3		-2.535	-0.549	F4.23	

Pro forma F5

Net debt analysis (appointed activities)Icosa Water ServicesICW

1		2		3	4	5	6	Line reference	Comments (For internal use only, not to be used for external reporting)	
Line description	Units	Decimal places (DPs)	Fixed rate	Floating rate	Index linked		Total			
					RPI	CPI/CPIH				
Interest rate risk profile										
Borrowings (excluding preference shares)	£m	3	1.824	0.000	0.000	0.000	1.824	F5.1		
Preference share capital	£m	3	0.000	0.000	0.000	0.000	0.000	F5.2		
Total borrowings	£m	3	1.824	0.000	0.000	0.000	1.824	F5.3		
Cash	£m	3	0.000	0.000	0.000	0.000	0.000	F5.4		
Short term deposits	£m	3	0.000	0.000	0.000	0.000	0.000	F5.5		
Net debt	£m	3	1.824	0.000	0.000	0.000	1.824	F5.6		
Line description			Total facility available		Amount drawn	Amount undrawn	Interest rate	Maturity date	Line reference	
Units			£m		£m	£m	%	d/m/y		
Decimal places (DPs)			3		3	3	2	0		
Financing available										
Intragroup Revolving Loan Facility for general corporate and working capital			10.000		-1.824	8.176	4.00%	15/01/2026	F5.7	
Icosa has access to the group's significant financing facilities if required.			0.000		0.000	0.000	0.00%	00/01/1900	F5.8	
			0.000		0.000	0.000	0.00%	00/01/1900	F5.9	
			0.000		0.000	0.000	0.00%	00/01/1900	F5.10	
			0.000		0.000	0.000	0.00%	00/01/1900	F5.11	
Total			10.000		-1.824	8.176			F5.12	

Pro forma P1

Performance - non-financial information

Icosa Water Services ICW

1	2	3	4	5	6	7	8	9	10	11	12	13	14	15	16	17	18	19	20	21	22	23	24	25	26	27	28	
Line description					Properties										Annual site volumes				Metering penetration (households only)		Length of mains	Length of sewers	Line reference					
					Water only					Water and wastewater					Wastewater only					Households				Non-households				
					Household properties	Non-household properties	Void household properties	Void non-household properties	Total properties	Household properties	Non-household properties	Void household properties	Void non-household properties	Total properties	Household properties	Non-household properties	Void household properties	Void non-household properties	Total properties	Water	Wastewater	Water		Wastewater	Metered household properties	Unmetered household properties		
					000s	000s	000s	000s	000s	000s	000s	000s	000s	000s	000s	000s	000s	000s	000s	000s	Ml/yr	Ml/yr		Ml/yr	Ml/yr	Nr	Nr	
Units					000s	000s	000s	000s	000s	000s	000s	000s	000s	000s	000s	000s	000s	000s	000s	000s	Ml/yr	Ml/yr	Ml/yr	Ml/yr	Nr	Nr	km	km
Decimal places (DPs)					3	3	3	3	3	3	3	3	3	3	3	3	3	3	3	3	2	2	2	2	0	0	1	1

Unique ID	Site name	Incumbent region (water)	Incumbent region (wastewater)	Postcode
1801	Amberstone Rd Hailsham	South East Eastern	Southern	BN27
1719	Barty Farm, Bearsted, Maidstone	South East Eastern	Southern	ME14
1823	Bedford Road, Lower Stondon	Affinity Central	Anglian	SG16
1716	Benhall Road Tunbridge Wells	South East Eastern	Southern	TN2
1923	Berry Acres Paignton	South West	South West	TQ4
1715	Bicknor Gore Court Road	South East Eastern	Southern	ME15
1914	Bishops Lane Ringmer East Sussex	South East Eastern	Southern	BN8
1901	Boughton Monchelsea Maidstone	South East Eastern	Southern	ME17
2021	Burndell Road, Yapton	Portsmouth	Southern	BN18
1919	Chapel Gate Launceston	South West	South West	PL15
1812	Charing Kent	South East Eastern	Southern	TN27
1711	Cheriton Road Southampton	Southern	Southern	SO30
1908	Coldharbour Northfleet	Southern	Southern	DA11
1802	Common Road Sissinghurst	South East Eastern	Southern	TN17
1705	Conningbrook Ashford Phase 1	South East Eastern	Southern	TN24
1819	Cuckoo Fields Hailsham	South East Eastern	Southern	BN27
1929	Dovers Corner Rainham	Northumbrian Essex	Thames	RM13
1710	Drayton Meadow Market Drayton	Severn Trent	United Utilities	TF9
1807	East of Billingshurst	Southern	Southern	M300
1811	Elmswell Wetherden Rd, Suffolk	Anglian	Anglian	IP30
2015	Falfield, Gloucestershire	Wessex	Wessex	GL12
1902	Fishers Farm, Staplehurst Kent	South East Eastern	Southern	TN
1718	Forstal Lane Coxheath	South East Eastern	Southern	ME17
1911	Forty Acres Bedhampton	Independent Water Networks	Southern	PO9
1720	Graham Road, Waddington	Anglian	Anglian	LN5
1721	Greenhill Way Hayward Heath	South East Eastern	Southern	RH17
1904	Havenswood Eccles	United Utilities	United Utilities	M30
1822	Headcorn Kent	South East Eastern	Southern	TN27
1804	Hen Farm, Staplehurst Kent	South East Eastern	Southern	TN12
1906	Hinxhill Ashford	South East Eastern	Southern	TN24
1820	Hogwood Farm, Finchampstead	Thames	Thames	RG40
1938	Innsworth Gloucester	Severn Trent	Severn Trent	GL3
1821	Lady Dane Farm, Faversham	South East Eastern	Southern	ME13
2010	Lea Castle, Kidderminster	Independent Water Networks	Severn Trent	DY10
1722	Lindfield Hayward Heath	South East Eastern	Southern	RH16
1817	London Road, Hassocks	South East Eastern	Southern	BN6
1913	Mansfield Road Chesterfield	Severn Trent	Yorkshire	S41
1709	Marringdean Road Billingshurst	Southern	Southern	RH14
2009	North End, Yatton	Wessex	Wessex	BS49
1810	Ospringe A Brickworks Faversham	South East Eastern	Southern	ME13
1815	Ospringe B Faversham	South East Eastern	Southern	ME13
1927	Otterham Quay Rainham Kent	Independent Water Networks	Southern	ME8
1714	Paula Rosa, Storrington	Southern	Southern	RH20
1813	Peacehaven	South East Eastern	Southern	BN01
1918	Pembers Hill Farm, Fair Oak,	Southern	Southern	SO50
1803	Perry Court Faversham Kent	South East Eastern	Southern	ME13
1915	Perrybrook Gloucester	Severn Trent	Severn Trent	GL3
1816	Perrybrook ph 3 Brockworth	Severn Trent	Severn Trent	GL3
1818	Riverside College Runcorn	United Utilities	United Utilities	WA7
1704	Rochester Riverside Medway	Southern	Southern	ME1
1912	Rose Mead Farm Horam	South East Eastern	Southern	TN21
1702	Rosewood Park, Barnhorn Green	South East Eastern	Southern	TN39
1805	Rownhams Southampton	Southern	Southern	SO16
2002	Sodbury Road, Wickwar	Wessex	Wessex	GL12
1937	Springfield Mill Maidstone	South East Eastern	Southern	ME14
1708	Springhead Park Northfleet	Thames	Southern	DA11
1706	Surrey Street Glossop	United Utilities	United Utilities	SK13
1925	Sutton Rd Maidstone	Independent Water Networks	Southern	ME17
1809	Thannington Canterbury	Independent Water Networks	Southern	CT1
1824	The Hill Littlebourne	Southern	Southern	CT3
1707	Thetford Phase 1 Norfolk	Anglian	Anglian	IP24
1825	Toddington Lane, Littlehampton	Southern	Southern	BN17
1910	Toddington Lane, Littlehampton	Southern	Southern	BN17
2001	Twigworth, Gloucester	Severn Trent	Severn Trent	GL2
1703	Union Park, Falmouth	South West	South West	TR11
1808	West Durrington	Southern	Southern	BN13
1806	West End Lane Henfield	Southern	Southern	BN5
2005	West of Chichester Phase 1	Portsmouth	Southern	PO19
1701	West Raynham Norfolk	Anglian	Anglian	NR21
1905	Westridge Village Isle of Wight	Southern	Southern	PO33
1926	Wilton Park Beaconsfield	Affinity Central	Thames	HP9
2007	Woodacres, Arlington Road	South East Eastern	Southern	BN27

Summary information
Total

0.000	0.000	0.000	0.000	0.000	0.000	0.000	0.000	0.000	0.000	0.000	0.106	0.000	0.002	0.000	0.108	0.000	7.724	0.000	0.000	0.108	0.000	0.000	1.080	P1.1801
0.000	0.000	0.000	0.000	0.000	0.000	0.000	0.000	0.000	0.000	0.000	0.054	0.000	0.002	0.000	0.056	0.000	3.230	0.000	0.000	0.056	0.000	0.000	0.560	P1.1719
0.000	0.000	0.000	0.000	0.000	0.000	0.000	0.000	0.000	0.000	0.000	0.028	0.000	0.027	0.000	0.055	0.000	0.210	0.000	0.000	0.055	0.000	0.000	0.550	P1.1823
0.000	0.000	0.000	0.000	0.000	0.000	0.000	0.000	0.000	0.000	0.000	0.048	0.000	0.001	0.000	0.049	0.000	3.993	0.000	0.000	0.049	0.000	0.000	0.490	P1.1716
0.000	0.000	0.000	0.000	0.000	0.000	0.000	0.000	0.000	0.000	0.000	0.006	0.000	0.000	0.000	0.006	0.000	0.206	0.000	0.000	0.006	0.000	0.000	0.060	P1.1923
0.000	0.000	0.000	0.000	0.000	0.000	0.000	0.000	0.000	0.000	0.000	0.227	0.000	0.002	0.000	0.229	0.000	18.330	0.000	0.000	0.229	0.000	0.000	2.290	P1.1715
0.000	0.000	0.000	0.000	0.000	0.000	0.000	0.000	0.000	0.000	0.000	0.041	0.000	0.000	0.000	0.041	0.000	2.621	0.000	0.000	0.041	0.000	0.000	0.410	P1.1914
0.000	0.000	0.000	0.000	0.000	0.000	0.000	0.000	0.000	0.000	0.000	0.077	0.000	0.000	0.000	0.077	0.000	5.866	0.000	0.000	0.077	0.000	0.000	0.770	P1.1901
0.000	0.000	0.000	0.000	0.000	0.000	0.000	0.000	0.000	0.000	0.000	0.016	0.000	0.004	0.000	0.020	0.000	0.355	0.000	0.000	0.020	0.000	0.000	0.200	P1.2021
0.000	0.000	0.000	0.000	0.000	0.000	0.000	0.000	0.000	0.000	0.000	0.066	0.000	0.008	0.000	0.074	0.000	3.531	0.000	0.000	0.074	0.000	0.000	0.740	P1.1919
0.000	0.000	0.000	0.000	0.000	0.000	0.000	0.000	0.000	0.000	0.000	0.060	0.000	0.000	0.000	0.060	0.000	5.550	0.000	0.000	0.060	0.000	0.000	0.600	P1.1812
0.000	0.000	0.000	0.000	0.000	0.000	0.000	0.000	0.000	0.000	0.000	0.150	0.000	0.004	0.000	0.154	0.000	13.875	0.000	0.000	0.154	0.000	0.000	1.540	P1.1711
0.000	0.000	0.000	0.000	0.000	0.000	0.000	0.000	0.000	0.000	0.000	0.132	0.000	0.028	0.000	0.160	0.000	3.777	0.000	0.000	0.160	0.000	0.000	1.600	P1.1908
0.000	0.000	0.000	0.000	0.000	0.000	0.000	0.000	0.000	0.000	0.000	0.060	0.000	0.001	0.000	0.061	0.000	5.550	0.000	0.000	0.061	0.000	0.000	0.610	P1.1802
0.000	0.000	0.000	0.000	0.000	0.000	0.189	0.000	0.021	0.000	0.210	0.000	0.000	0.000	0.000	0.000	16.900	15.633	0.000	0.000	0.210	0.000	2.100	2.100	P1.1705
0.000	0.000	0.000	0.000	0.000	0.000	0.000	0.000	0.000	0.000	0.000	0.057	0.000	0.005	0.000	0.062	0.000	4.101	0.000	0.000	0.062	0.000	0.000	0.620	P1.1819
0.000	0.000	0.000	0.000	0.000	0.000	0.000	0.000	0.000	0.000	0.000	0.015	0.000	0.000	0.000	0.015	0.000	0.392	0.000	0.000	0.015	0.000	0.000	0.150	P1.1929
0.000	0.000	0.000	0.000	0.000	0.000	0.000	0.000	0.000	0.000	0.000	0.137	0.000	0.008	0.000	0.145	0.000	11.525	0.000	0.000	0.145	0.000	0.000	1.450	P1.1710
0.000	0.000	0.000	0.000	0.000	0.000	0.000	0.000	0.000	0.000	0.000	0.371	0.000	0.015	0.000	0.386	0.000	26.270	0.000	0.000	0.386	0.000	0.000	3.860	P1.1807
0.000	0.000	0.000	0.000	0.000	0.000	0.000	0.000	0.000	0.000	0.000	0.171	0.000	0.017	0.000	0.188	0.000	12.022	0.000	0.000	0.188	0.000	0.000	1.880	P1.1811
0.000	0.000	0.000	0.000	0.000	0.000	0.000	0.000	0.000	0.000	0.000	0.013	0.000	0.002	0.000	0.015	0.000	0.451	0.000	0.000	0.015	0.000	0.000	0.150	P1.2015
0.000	0.000	0.000	0.000	0.000	0.000	0.000	0.000	0.000	0.000	0.000	0.057	0.000	0.000	0.000	0.057	0.000	3.384	0.000	0.000	0.057	0.000	0.000	0.570	P1.1902
0.000	0.000	0.000	0.000	0.000	0.000	0.169	0.000	0.021	0.000	0.190	0.000	0.000	0.000	0.000	0.000	13.708	12.680	0.000	0.000	0.190	0.000	1.900	1.900	P1.1718
0.000	0.000	0.000	0.000	0.000	0.000	0.000	0.000	0.000	0.000	0.000	0.036	0.000	0.009	0.000	0.045	0.000	1.164	0.000	0.000	0.045	0.000	0.000	0.450	P1.1911
0.000	0.000	0.000	0.000	0.000	0.000	0.000	0.000	0.000	0.000	0.000	0.012	0.000	0.002	0.000	0.014	0.000	0.367	0.000	0.000	0.014	0.000	0.000	0.140	P1.1720
0.000	0.000	0.000	0.000	0.000	0.000	0.000	0.000	0.000	0.000	0.000	0.111	0.000	0.002	0.000	0.113	0.000	9.997	0.000	0.000	0.113	0.000	0.000	1.130	P1.1721
0.000	0.000	0.000	0.000	0.000	0.000	0.000	0.000	0.000	0.000	0.000	0.244	0.000	0.009	0.000	0.253	0.000	23.117	0.000	0.000	0.253	0.000	0.000	2.530	P1.1904
0.000	0.000	0.000	0.000	0.000	0.000	0.102	0.000	0.015	0.000	0.117	0.000	0.000	0.000	0.000	0.000	8.825	8.163	0.000	0.000	0.117	0.000	1.170	1.170	P1.1822
0.000	0.000	0.000	0.000	0.000	0.188	0.000	0.006	0.000	0.000	0.194	0.000	0.000	0.000	0.000	0.000	17.442	16.134	0.000	0.000	0.194	0.000	1.940	1.940	P1.1804
0.000	0.000	0.000	0.000	0.000	0.000	0.000	0.000	0.000	0.000	0.000	0.081	0.000	0.000	0.000	0.081	0.000	6.182	0.000	0.000	0.081	0.000	0.000	0.810	P1.1906
0.000	0.000	0.000	0.000	0.000	0.000	0.000	0.000	0.000	0.000	0.000	0.094	0.000	0.001	0.000	0.095	0.000	7.650	0.000	0.000	0.095	0.000	0.000	0.950	P1.1820
0.000	0.000	0.000	0.000	0.000	0.060	0.000	0.008	0.000	0.000	0.068	0.000	0.000	0.000	0.000	0.000	3.800	3.800	0.000	0.000	0.068	0.000	0.680	0.680	P1.1938
0.000	0.000	0.000	0.000	0.000	0.000	0.000	0.000	0.000	0.000	0.000	0.158	0.000	0.005	0.000	0.163	0.000	12.148	0.000	0.000	0.163	0.000	0.000	1.630	P1.1821
0.000	0.000	0.000	0.000	0.000	0.000	0.000	0.000	0.000	0.000	0.000	0.033	0.000	0.013	0.000	0.046	0.000	0.875	0.000	0.000	0.046	0.000	0.000	0.460	P1.2010
0.000	0.000	0.000	0.000	0.000	0.000	0.000	0.000	0.000	0.000	0.000	0.106	0.000	0.000	0.000	0.106	0.000	8.394	0.000	0.000	0.106	0.000	0.000	1.060	P1.1722
0.000	0.000	0.000	0.000	0.000	0.000	0.000	0.000	0.000	0.000	0.000	0.123	0.000	0.001	0.000	0.124	0.000	11.139	0.000	0.000	0.124	0.000	0.000	1.240	P1.1817
0.000	0.000	0.000	0.000	0.000	0.000	0.000	0.000	0.000	0.000	0.000	0.022	0.000	0.003	0.000	0.025	0.000	0.720	0.000	0.000	0.025	0.000	0.000	0.250	P1.1913
0.000	0.000	0.000	0.000	0.000	0.000	0.000	0.000	0.000	0.000	0.000	0.079	0.000	0.002	0.000	0.081	0.000	7.061	0.000	0.000	0.081	0.000	0.000	0.810	P1.1709
0.000	0.000	0.000	0.000	0.000	0.000	0.000	0.000	0.000	0.000	0.000	0.014	0.000	0.013	0.000	0.027	0.000	0.111	0.000	0.000	0.027	0.000	0.000	0.270	P1.2009
0.000	0.000	0.000	0.000	0.000	0.000	0.000	0.000	0.000	0.000	0.000	0.057	0.000	0.003	0.000	0.060	0.000	2.991	0.000	0.000	0.060	0.000	0.000	0.600	P1.1810
0.000	0.000	0.000	0.000	0.000	0.031	0.000	0.010	0.000	0.000	0.041	0.000	0.000	0.000	0.000	0.000	1.267	1.172	0.000	0.000	0.041	0.000	0.410	0.410	P1.1815
0.000	0.000	0.000	0.000	0.000	0.000	0.000	0.000	0.000	0.000	0.000	0.013	0.000	0.009	0.000	0.022	0.000	0.401	0.000	0.000	0.022	0.000	0.000	0.220	P1.1927
0.000	0.000	0.000	0.000	0.000	0.000	0.000	0.000	0.000	0.000	0.000	0.098	0.000	0.003	0.000	0.101	0.000	9.026	0.000	0.000	0.101	0.000	0.000	1.010	P1.1714
0.000	0.000	0.000	0.000	0.000	0.000	0.000	0.000	0.000	0.000	0.000	0.151	0.000	0.005	0.000	0.156	0.000	12.595	0.000	0.000	0.156	0.000	0.000	1.560	P1.1813
0.000	0.000	0.000	0.000	0.000	0.000	0.000	0.000	0.000	0.000	0.000	0.059	0.000	0.002	0.000	0.061	0.000	1.511	0.000	0.000	0.061	0.000	0.000	0.610	P1.1918
0.000	0.000	0.000	0.000	0.000	0.000	0.000	0.000	0.000	0.000	0.000	0.217	0.000	0.001	0.000	0.218	0.000	16.719	0.000	0.000	0.218	0.000	0.000	2.180	P1.1803
0.000	0.000	0.000	0.000	0.000	0.000	0.000	0.000	0.000	0.000	0.000	0.015	0.000	0.002	0.000	0.017	0.000	0.692	0.000	0.000	0.017	0.000	0.000	0.170	P1.1915
0.000	0.000	0.000	0.000	0.000	0.000	0.000	0.000	0.000	0.000	0.000	0.029	0.000	0.003	0.000	0.032	0.000	1.158	0.000	0.000	0.032	0.000	0.000	0.320	P1.1816
0.000	0.000	0.000	0.000	0.000	0.000	0.000	0.000	0.000	0.000	0.000	0.143	0.												

Pro forma P2

1	2	3	4	5	6	7	8	9	10	11	12	
Line description				Complaints (household)	Complaints (non-household)	Customers on social tariffs	Customers on WaterSure tariffs	Customers on other reduced charges	Customers on the Priority Services Register	Guaranteed Standards Scheme		Line reference
Units				Nr	Nr	Nr	Nr	Nr	Nr	Total number of failures	Total compensation paid	
Decimal places (DPs)				0	0	0	0	0	0	0	£	

Unique ID	Site name	Incumbent region (water)	Incumbent region (wastewater)									
1801	Amberstone Rd Hailsham	South East Eastern	Southern	0	0	0	2	0	0	0	0	P2.1801
1719	Barty Farm, Bearsted, Maidstone	South East Eastern	Southern	0	0	0	1	0	0	0	0	P2.1719
1823	Bedford Road, Lower Stondon	Affinity Central	Anglian	0	0	0	0	0	0	0	0	P2.1823
1716	Benhall Road Tunbridge Wells	South East Eastern	Southern	0	0	0	0	0	0	0	0	P2.1716
1923	Berry Acres Paignton	South West	South West	0	0	0	0	0	0	0	0	P2.1923
1715	Bicknor Gore Court Road Maidstone	South East Eastern	Southern	0	0	0	5	0	0	0	0	P2.1715
1914	Bishops Lane Ringmer East Sussex	South East Eastern	Southern	0	0	0	0	0	0	0	0	P2.1914
1901	Boughton Monchelsea Maidstone	South East Eastern	Southern	0	0	0	1	0	0	0	0	P2.1901
2021	Burndell Road, Yapton	Portsmouth	Southern	0	0	0	0	0	0	0	0	P2.2021
1919	Chapel Gate Launceston	South West	South West	0	0	0	0	0	0	0	0	P2.1919
1812	Charing Kent	South East Eastern	Southern	0	0	0	2	0	0	0	0	P2.1812

1701	West Raynham Norfolk	Anglian	Anglian
1905	Westridge Village Isle of Wight	Southern	Southern
1926	Wilton Park Beaconsfield	Affinity Central	Thames
2007	Woodacres, Arlington Road	South East Eastern	Southern

Summary information
Total
Average of sites

Standardisation	
Number of household properties (000)	7.803
Number of household properties	7803
Number of non-household properties (000)	0.029
Number of non-household properties	29
Standardised parameter (pre populated)	
Standardised value	
Standardised units (pre populated)	

1	0	0	1	0	5	0	0	P2.1701
0	0	0	0	0	0	0	0	P2.1905
0	0	0	0	0	0	0	0	P2.1926
0	0	0	2	0	0	0	0	P2.2007

7	0	0	61	0	35	0	0	P2.1001
0.097	0.000	0.000	0.847	0.000	0.486	0.000	0.000	P2.1002

10000	10000				
9.0	0.0	0.00%	0.78%	0.00%	0.45%
Nr per 10,000 household properties	Nr per 10,000 non-household properties	Percentage of household properties	Percentage of household properties	Percentage of household properties	Percentage of household properties

Pro forma P3

1	2	3	4	5	6	7	8	9	10	11	12	13	14	15	16	
Line description			Annual leakage	Household per capita consumption (excluding supply pipe leakage)				Water supply interruptions			Mains repairs	Compliance risk index	Line reference			
				Unmeasured		Measured								Overall		
				Consumption	Population	Per capita consumption per day	Consumption	Population	Per capita consumption per day	Per capita consumption per day						
Units			ML/yr	ML/yr	Nr	l/h/d	ML/yr	Nr	l/h/d	l/h/d	Total minutes lost (>3hrs)	Number of properties affected		Average number of minutes lost per water customer	Nr	%
Decimal places (DPs)			2	2	0	2	2	0	2	2	0	0		4	0	2

Unique ID	Site name	Incumbent region (water)														
1801	Amberstone Rd Hailsham	South East Eastern	0	0	0	0.00	8.35	192	119.15	119.15	0	0		0		P3.1801
1719	Barty Farm, Bearsted, Maidstone	South East Eastern	0	0	0	0.00	3.49	80	119.52	119.52	0	0		0		P3.1719
1823	Bedford Road, Lower Stondon	Affinity Central	0	0	0	0.00	0.23	5	126.03	126.03	0	0		0		P3.1823
1716	Benhall Road Tunbridge Wells	South East Eastern	0	0	0	0.00	4.32	99	119.55	119.55	0	0		0		P3.1716
1923	Berry Acres Paignton	South West	0	0	0	0.00	0.22	5	120.55	120.55	0	0		0		P3.1923
1715	Bicknor Gore Court Road Maidstone	South East Eastern	0	0	0	0.00	19.82	456	119.08	119.08	0	0		0		P3.1715
1914	Bishops Lane Ringmer East Sussex	South East Eastern	0	0	0	0.00	2.83	65	119.28	119.28	0	0		0		P3.1914
1901	Boughton Monchelsea Maidstone	South East Eastern	0	0	0	0.00	6.34	146	118.97	118.97	0	0		0		P3.1901
2021	Burndell Road, Yapton	Portsmouth	0	0	0	0.00	0.38	9	115.68	115.68	0	0		0		P3.2021
1919	Chapel Gate Launceston	South West	0	0	0	0.00	3.72	85	119.90	119.90	0	0		0		P3.1919
1812	Charing Kent	South East Eastern	0	0	0	0.00	6.00	138	119.12	119.12	0	0		0		P3.1812
1711	Cheriton Road Southampton	Southern	0	0	0	0.00	15.00	345	119.12	119.12	0	0		0		P3.1711
1908	Coldharbour Northfleet	Southern	0	0	0	0.00	4.08	94	118.92	118.92	0	0		0		P3.1908
1802	Common Road Sissinghurst	South East Eastern	0	0	0	0.00	6.00	138	119.12	119.12	0	0		0		P3.1802
1705	Conningbrook Ashford Phase 1	South East Eastern	10.91	0	0	0.00	16.90	389	119.03	119.03	0	0		0		P3.1705
1819	Cuckoo Fields Hailsham	South East Eastern	0	0	0	0.00	4.43	102	118.99	118.99	0	0		0		P3.1819
1929	Dovers Corner Rainham	Northumbrian Essex	0	0	0	0.00	0.39	9	118.72	118.72	0	0		0		P3.1929
1710	Drayton Meadow Market Drayton	Severn Trent	0	0	0	0.00	11.52	265	119.10	119.10	0	0		0		P3.1710
1807	East of Billingshurst	Southern	0	0	0	0.00	28.40	653	119.16	119.16	0	0		0		P3.1807
1811	Elmswell Wetherden Rd, Suffolk	Anglian	0	0	0	0.00	13.36	307	119.23	119.23	0	0		0		P3.1811
2015	Falfield, Gloucestershire	Wessex	0	0	0	0.00	0.48	11	119.55	119.55	0	0		0		P3.2015
1902	Fishers Farm, Staplehurst Kent	South East Eastern	0	0	0	0.00	3.66	84	119.37	119.37	0	0		0		P3.1902
1718	Forstal Lane Coxheath	South East Eastern	0.08	0	0	0.00	13.71	315	119.24	119.24	0	0		0		P3.1718
1911	Forty Acres Bedhampton	Independent Water Networks	0	0	0	0.00	1.26	29	119.04	119.04	0	0		0		P3.1911
1720	Grantham Road, Waddington	Anglian	0	0	0	0.00	0.41	9	124.81	124.81	0	0		0		P3.1720
1721	Greenhill Way Hayward Heath	South East Eastern	0	0	0	0.00	10.48	241	119.14	119.14	0	0		0		P3.1721
1904	Havenswood Eccles	United Utilities	0	0	0	0.00	23.12	532	119.06	119.06	0	0		0		P3.1904
1822	Headcorn Kent	South East Eastern	0.62	0	0	0.00	8.82	203	119.04	119.04	0	0		0		P3.1822
1804	Hen Farm,Staplehurst Kent	South East Eastern	1.44	0	0	0.00	17.44	401	119.15	119.15	0	0		0		P3.1804

1906	Hinxhill Ashford	South East Eastern
1820	Hogwood Farm, Finchampstead	South East Western
1938	Innsworth Gloucester	Severn Trent
1821	Lady Dane Farm, Faversham	South East Eastern
2010	Lea Castle, Kiddeminster	Independent Water Networks
1722	Lindfield Hayward Heath	South East Eastern
1817	London Road, Hassocks	South East Eastern
1913	Mansfield Road Chesterfield	Severn Trent
1709	Marringdean Road Billingshurst	Southern
2009	North End, Yatton	Wessex
1810	Ospringe A Brickworks Faversham	South East Eastern
1815	Ospringe B Faversham	South East Eastern
1927	Otterham Quay Rainham Kent	Independent Water Networks
1714	Paula Rosa, Storrington	Southern
1813	Peacehaven	South East Eastern
1918	Pembers Hill Farm, Fair Oak, Eastleigh	Southern
1803	Perry Court Faversham Kent	South East Eastern
1915	Perrybrook Gloucester	Severn Trent
1816	Perrybrook ph 3 Brockworth Gloucester	Severn Trent
1818	Riverside College Runcorn	United Utilities
1704	Rochester Riverside Medway	Southern
1912	Rose Mead Farm Horam	South East Eastern
1702	Rosewood Park, Barnhorn Green Bexhill	South East Eastern
1805	Rownhams Southampton	Southern
2002	Sodbury Road, Wickwar	Wessex
1937	Springfield Mill Maidstone	South East Eastern
1708	Springhead Park Northfleet	Thames
1706	Surrey Street Glossop Manchester	United Utilities
1925	Sutton Rd Maidstone	Independent Water Networks
1809	Thannington Canterbury	Independent Water Networks
1824	The Hill Littlebourne	Southern
1707	Thetford Phase 1 Norfolk	Anglian
1825	Toddington Lane, Littlehampton	Southern
1910	Toddington Lane, Littlehampton Phase 1	Southern
2001	Twigworth, Gloucester	Severn Trent
1703	Union Park, Falmouth	South West
1808	West Durrington	Southern
1806	West End Lane Henfield	Southern
2005	West of Chichester Phase 1	Portsmouth
1701	West Raynham Norfolk	Anglian
1905	Westridge Village Isle of Wight	Southern
1926	Wilton Park Beaconsfield	Affinity Central
2007	Woodacres, Arlington Road	South East Eastern

Summary information
Total
Average of sites

Standardisation	
Length of mains for all sites (km)	20.8
Number of water properties (000)	2.110
Number of water properties	2110
Standardised parameter (pre populated)	
Standardised value	

0	0	0	0.00	6.68	154	118.84	118.84	0	0		0
0	0	0	0.00	7.65	176	119.08	119.08	0	0		0
0.23	0	0	0.00	3.80	87	119.67	119.67	0	0		0
0	0	0	0.00	13.13	302	119.11	119.11	0	0		0
0	0	0	0.00	0.88	20	120.55	120.55	0	0		0
0	0	0	0.00	9.08	209	119.03	119.03	0	0		0
0	0	0	0.00	12.04	277	119.08	119.08	0	0		0
0	0	0	0.00	0.76	17	122.48	122.48	0	0		0
0	0	0	0.00	7.63	176	118.77	118.77	0	0		0
0	0	0	0.00	0.12	3	109.59	109.59	0	0		0
0	0	0	0.00	3.23	74	119.59	119.59	0	0		0
0	0	0	0.00	1.27	29	119.98	119.98	0	0		0
0	0	0	0.00	0.43	10	117.81	117.81	0	0		0
0	0	0	0.00	9.76	224	119.37	119.37	0	0		0
0	0	0	0.00	13.62	313	119.22	119.22	0	0		0
0	0	0	0.00	1.63	38	117.52	117.52	0	0		0
0	0	0	0.00	18.08	416	119.07	119.07	0	0		0
0	0	0	0.00	0.69	16	118.15	118.15	0	0		0
0	0	0	0.00	1.16	27	117.71	117.71	0	0		0
0	0	0	0.00	14.27	328	119.19	119.19	0	0		0
0.52	0	0	0.00	28.75	661	119.16	119.16	0	0		0
0	0	0	0.00	4.21	97	118.91	118.91	0	0		0
2.92	0	0	0.00	25.59	589	119.03	119.03	0	0		0
0	0	0	0.00	3.36	77	119.55	119.55	0	0		0
0	0	0	0.00	0.01	0			0	0		0
0	0	0	0.00	1.52	35	118.98	118.98	0	0		0
0	0	0	0.00	17.72	408	118.99	118.99	0	0		0
0	0	0	0.00	5.10	117	119.42	119.42	0	0		0
0	0	0	0.00	2.05	47	119.50	119.50	0	0		0
0	0	0	0.00	3.81	88	118.62	118.62	0	0		0
0	0	0	0.00	0.48	11	119.55	119.55	0	0		0
0.76	0	0	0.00	10.35	238	119.14	119.14	0	0		0
0.04	0	0	0.00	2.43	56	118.88	118.88	0	0		0
0	0	0	0.00	30.10	692	119.17	119.17	0	0		0
0.03	0	0	0.00	2.87	66	119.14	119.14	0	0		0
0	0	0	0.00	10.40	239	119.22	119.22	0	0		0
0	0	0	0.00	28.65	659	119.11	119.11	0	0		0
0	0	0	0.00	16.41	377	119.25	119.25	0	0		0
0	0	0	0.00	0.85	20	116.44	116.44	0	0		0
3.1	0	0	0.00	17.19	395	119.23	119.23	0	0		0
0.12	0	0	0.00	4.77	110	118.80	118.80	0	0		0
0	0	0	0.00	0.08	2	109.59	109.59	0	0		0
0	0	0	0.00	7.39	170	119.10	119.10	0	0		0

20.77	0	0	0.00	585	13457	8449.23	8449.23	0	0	0.0000	0
0.288	0.000	0.000	0.000	8.127	186.903	119.003	119.003	0.000	0.000	#DIV/0!	0.000

P3.1906
P3.1820
P3.1938
P3.1821
P3.2010
P3.1722
P3.1817
P3.1913
P3.1709
P3.2009
P3.1810
P3.1815
P3.1927
P3.1714
P3.1813
P3.1918
P3.1803
P3.1915
P3.1816
P3.1818
P3.1704
P3.1912
P3.1702
P3.1805
P3.2002
P3.1937
P3.1708
P3.1706
P3.1925
P3.1809
P3.1824
P3.1707
P3.1825
P3.1910
P3.2001
P3.1703
P3.1808
P3.1806
P3.2005
P3.1701
P3.1905
P3.1926
P3.2007

20.770

#DIV/0!

119.1338449.233

	1000	
	0.000	98.00%

Standardised units (prepopulated)

MI/yr

l/h/d

l/h/d	l/h/d
-------	-------

Average number of minutes lost per customer	Nr per 1,000km of mains	Percentage
---	-------------------------	------------

Pro forma P4

1	2	3	4	5	6	7	8	9	10	
Line description			Internal sewer flooding	External sewer flooding	Sewer collapses	Pollution incidents	Treatment works compliance			Line reference
							Number of failed discharges	Site has numeric discharge permits?	Compliance	
							Nr	TRUE/FALSE	%	
Units			Nr	Nr	Nr	Nr	0	0	2	
Decimal places (DPs)			0	0	0	0	0	0	2	

Unique ID	Site name	Incumbent region (wastewater)								
1801	Amberstone Rd Hailsham	Southern	0	1	0	0	0	FALSE		P4.1801
1719	Barty Farm, Bearsted, Maidstone	Southern	0	0	0	0	0	FALSE		P4.1719
1823	Bedford Road, Lower Stondon	Anglian	0	0	0	0	0	FALSE		P4.1823
1716	Benhall Road Tunbridge Wells	Southern	0	0	0	0	0	FALSE		P4.1716
1923	Berry Acres Paignton	South West	0	0	0	0	0	FALSE		P4.1923
1715	Bicknor Gore Court Road Maidstone	Southern	0	0	0	0	0	FALSE		P4.1715
1914	Bishops Lane Ringmer East Sussex	Southern	0	0	0	0	0	FALSE		P4.1914
1901	Boughton Monchelsea Maidstone	Southern	0	0	0	0	0	FALSE		P4.1901
2021	Burndell Road, Yapton	Southern	0	0	0	0	0	FALSE		P4.2021
1919	Chapel Gate Launceston	South West	0	0	0	0	0	FALSE		P4.1919
1812	Charing Kent	Southern	0	0	0	0	0	FALSE		P4.1812
1711	Cheriton Road Southampton	Southern	0	0	0	0	0	FALSE		P4.1711
1908	Coldharbour Northfleet	Southern	0	0	0	0	0	FALSE		P4.1908
1802	Common Road Sissinghurst	Southern	0	1	0	0	0	FALSE		P4.1802
1705	Conningbrook Ashford Phase 1	Southern	0	0	0	0	0	FALSE		P4.1705
1819	Cuckoo Fields Hailsham	Southern	0	0	0	0	0	FALSE		P4.1819
1929	Dovers Corner Rainham	Thames	0	0	0	0	0	FALSE		P4.1929
1710	Drayton Meadow Market Drayton	United Utilities	0	0	0	0	0	FALSE		P4.1710
1807	East of Billingshurst	Southern	0	0	0	0	0	FALSE		P4.1807
1811	Elmswell Wetherden Rd, Suffolk	Anglian	0	0	0	0	0	FALSE		P4.1811
2015	Falfield, Gloucestershire	Wessex	0	0	0	0	0	FALSE		P4.2015
1902	Fishers Farm, Staplehurst Kent	Southern	0	0	0	0	0	FALSE		P4.1902
1718	Forstal Lane Coxheath	Southern	0	1	0	0	0	FALSE		P4.1718
1911	Forty Acres Bedhampton	Southern	0	0	0	0	0	FALSE		P4.1911
1720	Grantham Road, Waddington	Anglian	0	0	0	0	0	FALSE		P4.1720
1721	Greenhill Way Hayward Heath	Southern	0	0	0	0	0	FALSE		P4.1721
1904	Havenswood Eccles	United Utilities	0	0	0	0	0	FALSE		P4.1904
1822	Headcorn Kent	Southern	0	0	0	0	0	FALSE		P4.1822
1804	Hen Farm,Staplehurst Kent	Southern	0	0	0	0	0	FALSE		P4.1804
1906	Hinxhill Ashford	Southern	0	0	0	0	0	FALSE		P4.1906
1820	Hogwood Farm, Finchampstead	Thames	0	0	0	0	0	FALSE		P4.1820
1938	Innsworth Gloucester	Severn Trent	0	0	0	0	0	FALSE		P4.1938
1821	Lady Dane Farm, Faversham	Southern	0	0	0	0	0	FALSE		P4.1821
2010	Lea Castle, Kiddeminster	Severn Trent	0	0	0	0	0	FALSE		P4.2010
1722	Lindfield Hayward Heath	Southern	0	0	0	0	0	FALSE		P4.1722
1817	London Road, Hassocks	Southern	0	0	0	0	0	FALSE		P4.1817
1913	Mansfield Road Chesterfield	Yorkshire	0	0	0	0	0	FALSE		P4.1913
1709	Marringdean Road Billingshurst	Southern	0	0	0	0	0	FALSE		P4.1709
2009	North End, Yatton	Wessex	0	0	0	0	0	FALSE		P4.2009
1810	Ospringe A Brickworks Faversham	Southern	0	0	0	0	0	FALSE		P4.1810
1815	Ospringe B Faversham	Southern	0	0	0	0	0	FALSE		P4.1815
1927	Otterham Quay Rainham Kent	Southern	0	0	0	0	0	FALSE		P4.1927
1714	Paula Rosa, Storrington	Southern	0	0	0	0	0	FALSE		P4.1714
1813	Peacehaven	Southern	0	0	0	0	0	FALSE		P4.1813
1918	Pembers Hill Farm, Fair Oak, Eastleigh	Southern	0	0	0	0	0	FALSE		P4.1918
1803	Perry Court Faversham Kent	Southern	0	0	0	0	0	FALSE		P4.1803
1915	Perrybrook Gloucester	Severn Trent	0	0	0	0	0	FALSE		P4.1915
1816	Perrybrook ph 3 Brockworth Gloucester	Severn Trent	0	0	0	0	0	FALSE		P4.1816
1818	Riverside College Runcorn	United Utilities	0	0	0	0	0	FALSE		P4.1818
1704	Rochester Riverside Medway	Southern	0	0	0	0	0	FALSE		P4.1704
1912	Rose Mead Farm Horam	Southern	0	0	0	0	0	FALSE		P4.1912
1702	Rosewood Park, Barnhorn Green Bexhill	Southern	0	0	0	0	0	FALSE		P4.1702
1805	Rownhams Southampton	Southern	0	0	0	0	0	FALSE		P4.1805
2002	Sodbury Road, Wickwar	Wessex	0	0	0	0	0	FALSE		P4.2002
1937	Springfield Mill Maidstone	Southern	0	0	0	0	0	FALSE		P4.1937
1708	Springhead Park Northfleet	Southern	0	0	0	0	0	FALSE		P4.1708
1706	Surrey Street Glossop Manchester	United Utilities	0	0	0	0	0	FALSE		P4.1706
1925	Sutton Rd Maidstone	Southern	0	0	0	0	0	FALSE		P4.1925
1809	Thanington Canterbury	Southern	0	0	0	0	0	FALSE		P4.1809
1824	The Hill Littlebourne	Southern	0	0	0	0	0	FALSE		P4.1824
1707	Thetford Phase 1 Norfolk	Anglian	0	0	0	0	0	FALSE		P4.1707
1825	Toddington Lane, Littlehampton	Southern	0	0	0	0	0	FALSE		P4.1825
1910	Toddington Lane, Littlehampton Phase 1	Southern	0	0	0	0	0	FALSE		P4.1910
2001	Twigworth, Gloucester	Severn Trent	0	0	0	0	0	FALSE		P4.2001
1703	Union Park, Falmouth	South West	0	0	0	0	0	FALSE		P4.1703
1808	West Durrington	Southern	0	0	0	0	0	FALSE		P4.1808
1806	West End Lane Henfield	Southern	0	0	0	0	0	FALSE		P4.1806
2005	West of Chichester Phase 1	Southern	0	0	0	0	0	FALSE		P4.2005

1701	West Raynham Norfolk	Anglian
1905	Westridge Village Isle of Wight	Southern
1926	Wilton Park Beaconsfield	Thames
2007	Woodacres, Arlington Road	Southern

0	1	0	0	0	TRUE
0	1	0	0	0	FALSE
0	0	0	0	0	FALSE
0	0	0	0	0	FALSE

P4.1701
P4.1905
P4.1926
P4.2007

Summary information
Total
Average of sites

0	5	0	0	0
0.000	0.069	0.000	0.000	0.000

P4.1001
P4.1002

Standardisation	
Length of sewers for all sites (km)	78.0
Number of wastewater properties (000)	7.832
Number of wastewater properties	7832
Standardised parameter (pre populated)	
Standardised value	
Standardised units (pre populated)	

10000		1000	10000
0.000	5.000	0.000	0.000
Nr per 10,000 wastewater properties	Nr	Nr per 1,000km of sewer	Nr per 10,000km of sewer

100.00%
Percentage

ICOSA WATER SERVICES LIMITED

RING-FENCING CERTIFICATE

2022-2023

In accordance with the requirements set out in its Instrument of Appointment which came into effect on 1 June 2017, the Board of Directors of Icosa Water Services Limited (the "Company") confirm that, in the opinion of the Board:

1. The Company will have available to it sufficient financial resources and facilities to enable it to carry on the Regulated Activities, for at least the twelve month period with effect from the date of this certificate;
2. The Company will have available to it sufficient management resources and systems of planning and internal control to enable it to carry on the Regulated Activities, for at least the twelve month period with effect from the date of this certificate; and
3. All contracts entered into between the Company and any Associated Company include the necessary provisions and requirements in respect of the standard of service to be supplied to the Company, to ensure that it is able to carry on the Regulated Activities;

In providing this Certificate the Board of Directors have taken into account the following;

1. the latest financial position as set out in the Company's most recent management accounts;
2. the approved budget and capital expenditure programme of the Company;
3. the availability of a revolving credit facility in the amount of £150m and capex private placement notes of £50m which will be used to fund growth capital expenditure and general corporate and working capital requirements of the Company;
4. a stable and experienced senior management team, with a wide knowledge of the water industry together with a skilled and motivated workforce; and
5. appropriate risk management and governance arrangements.

Dated: 14 July 2021

Stephen Bradley <i>Stephen Bradley</i>	Raoul de Lange <i>Raoul de Lange</i>
Rob Bradley <i>R H Bradley</i>	

Transactions with associates

We require all transactions between the appointee and its associated companies must be disclosed and if any single transaction exceeds 0.5% of the turnover of the appointed business (or £10,000 if greater) it should not be aggregated.

- In particular, the following transactions, with related data, must be disclosed if over the materiality limit:
- loans by or to the appointee;
 - dividends paid to any associated company;
 - guarantees or other forms of security by the appointee;
 - transfer of any asset or liability by or to the appointee;
 - transfer of any corporation tax group losses by or to the appointee;
 - supply of any service by or to the appointee;
 - omission by the appointee or any associated company to exercise a right as a result of which the value of the net assets of the appointee is decreased; and
 - waiver of any consideration, remuneration or other payment by the appointee.

Service	Company	Turnover of associate (£m)	Terms of supply	Value
Asset Management Services - Ongoing planned / unplanned maintenance, water quality sampling and associated customer service.	Last Mile Asset Management Limited	£11.09m	Responsibility for the provision of asset management services transferred from Icosa Water Limited to Last Mile Asset Management Limited with effect from 01.04.21. Almost all services under this arrangement are sub-contracted by LMAM to external third parties outside of the group. Pre - existing terms that were negotiated by IWSL have been novated / transferred to LMAM and charges for FY21/22 have been set to reflect the current costs. The Directors of IWSL continue to work closely with LMAM to secure best value and cost savings.	£125,135
Corporation tax group relief received by regulated business	Associate surrendering the group relief.	£0	N/A	N/A

Service	Company	Turnover of associate	Terms of supply	Value

Service provided to the non- appointed business	Basis of recharge made by the appointed business		Value of the recharge made by the appointed business
Not applicable	N/A		N/A